

User's Manual for A4 Series Smart Switch

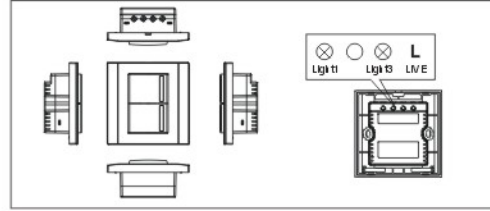
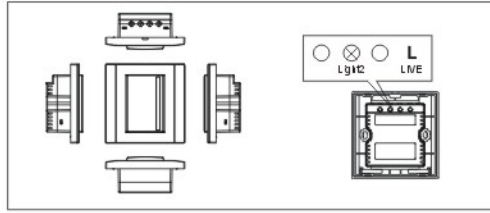
Production Introduction

A41 Smart Switch Series BC2-A1DF-B, BC2-A2DF-B, BC2-A3DF-B is one of the BECHAMP smart switch series. A4 Smart Switch Series can replace traditional illuminating switches. They are the best choice for your modern Smart Home.

Specification

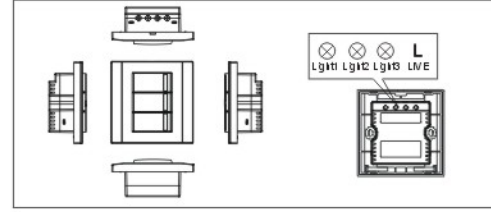
Working voltage	AC180-250V
Rating power	<=1100W
Working Temperature	0-50°C
Working humidity	<=90%RH
Receiving sensitivity	-105dBm
Receiving frequency	433.92MHz
Load Type	Incandescence light/ energy-saving light/ spot light/ fluorescent light

Cabling

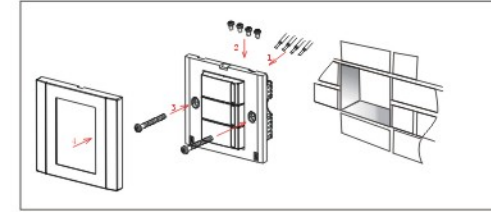


Caution

- 1) Make sure products are installed by professionals. Please turn off all power supply before installation.
- 2) DO NOT installed in bathroom.
- 3) Please check whether there is short circuit before installation.
- 4) The total power consumption of lights MUST NOT exceeds the rating power.
- 5) Switch will execute current command before executethe next command issued by user. (It takes 1.5 Second for remote controller to issue command before next)
- 6) Strongly recommend using light with approval (CE,UL...etc.)



Installation



Function:

- A. Wireless Control: Can use Remote Controller to control lighting's ON/OFF. (For details, please refer BC2-GGLR's user manual)
- B. Remote Control: Can be controlled by Internet or telephone by Touch Panel (BC2-D50L) or Telephone Controller (BC2-ET01)
- C. Luminous Indication: Indicate the location of switches in darkness.

Q&A

- Q1, Light is not on.
A1. Check the power
A2. Light is damaged, please check & replace it.
A3. Incorrect wiring. Please read user manual and wire it up again.
A4. Not enough power consumption (less than 5W) for light bulb, please change to larger one.
- Q2, Glittering
A1. The lighting load doesn't match the switch, please replace it.
- Q3, Can't control by Remote Controller
A1. Please read the user manual of Remote Controller.
A2. Low batteries. Replace immediately.

- Q4, Can't set up the scene configuration
A1. Please check the scene code.
A2. The scene checked code was deleted. Please check scene code again.

- Q5, Damaged switch
A1. Short circuit occurred during installation. Please check the circuit and replace a new switch
A2. Power consumption overloaded. Please reduce total power consumption of light bulbs